



LIVING LARGE AT  
**JAKARTA**

# CENTRE FOR **ECONOMIC - REGIONAL, NATIONAL AND INTERNATIONAL SCALE**

IN 2012, INDONESIA BECAME THE SECOND-FASTEST-GROWING G-20 ECONOMY, BEHIND CHINA. SINCE THEN, THE ANNUAL GROWTH RATE HAS FLUCTUATED AROUND 5%



# NEW JAKARTA IS READY TO MAKE OVER

INFRASTRUCTURE DEVELOPMENT IN THE  
TRANSPORTATION SECTOR IS ABLE TO  
CONNECT PRODUCTION AREAS WITH  
DISTRIBUTION AREAS AND FACILITATE  
ACCESS TO TOURIST AREAS.



# A MORE FAVOURABLE **TOURIST** **DESTINATION**

THE TOURISM SECTOR SIGNIFICANTLY CONTRIBUTES TO JAKARTA'S REVENUE. THERE HAS BEEN A POSITIVE TREND WITH AN INCREASED ARRIVAL OF TOURISTS, BOTH NATIONAL AND INTERNATIONAL. EVEN SO, JAKARTA'S GOVERNMENT NEEDS TO UNDERSTAND THAT THERE ARE MANY LOCATIONS WITHIN THE CITY THAT ARE IN NEED OF IMPROVEMENT TO ATTRACT MORE TOURISTS.

# ASIA'S CENTRAL BUSINESS DISTRICTS



SHIBUYA  
JAPAN



CENTRAL  
HONGKONG



ORCHARD ROAD  
SINGAPORE



A PLACE  
WHERE  
**BUSINESS**  
**GROWS**





A PLACE  
WHERE  
**DREAMS**  
**ARE MADE**

A PLACE TO  
BALANCE  
YOUR  
**MIND, BODY  
AND SOUL**





A PLACE  
WHERE  
**IMAGINATION**  
**WANDERS**



# SATRIO

IS THE NEXT  
ORCHARD ROAD  
IN JAKARTA

WELCOME TO



CIPUTRA WORLD JAKARTA



**DBS BANK  
TOWER**

**TOKOPEDIA  
TOWER**



# RAFFLES HOTEL JAKARTA



# ASCOTT JAKARTA



CIPUTRA ARTPRENEUR

CIPUTRA  
ARTPRENEUR

LOTTE  
SHOPPING  
AVENUE





# CIPUTRA WORLD 2

Office Tower

The Orchard

The Residence

The Newton 2

The Newton 1

W Hotel

# NEWTON 1



The background is a solid light blue color. It features several large, overlapping geometric shapes in a slightly darker shade of blue. In the top-left corner, there are three concentric, partial circular arcs. On the right side, there is a large, solid circular shape. At the bottom, there is a large, light blue shape that resembles a stylized 'U' or a wide, shallow bowl, which overlaps with the circular shape on the right.

LUXURY

**AT GLANCE,**  
**TIMELESSLY**  
ELEGANT

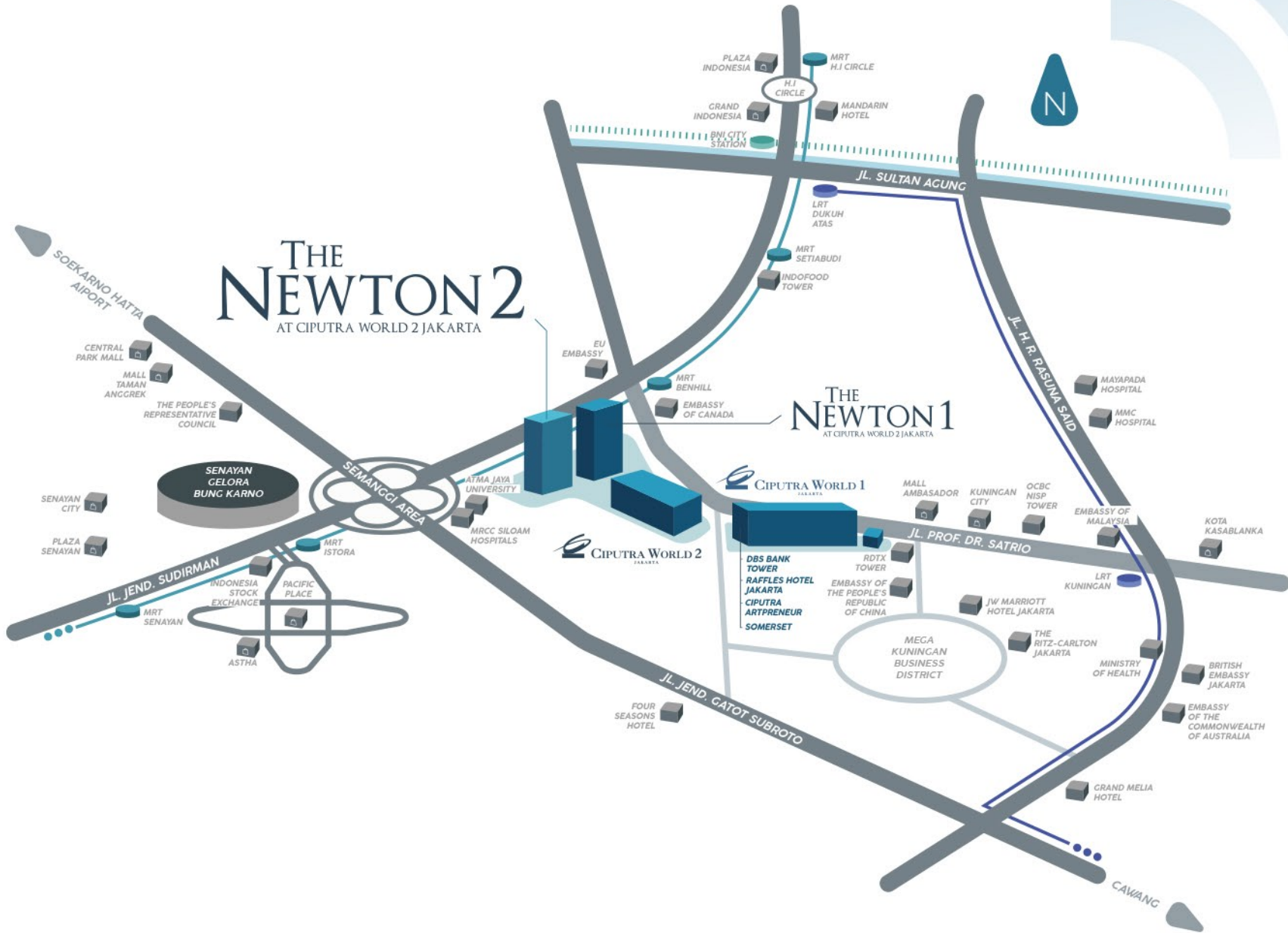


# THE NEWTON2

AT CIPUTRA WORLD 2 JAKARTA



Under its corporate credo of "Realizing high-quality construction, safely and on time," Toda Corporation has accumulated extensive technical expertise and experience over the course of its 135-year history. In recent years, Toda has reinforced its existing business-centered on the construction of hospitals, medical facilities and schools-by prioritizing such strategic fields as the construction of production facilities and office buildings. Diligently building a track record in these fields, Toda is concurrently accelerating its activities in business areas peripheral to its mainstay construction business, such as investment projects in the real estate development field. Toda is steadily expanding its business, while remaining highly regarded by customers for the quality it delivers both in Japan and overseas



**MRT STATION**  
MRT Benhill

**FINANCIAL AREA**  
DBS Bank Tower  
Tokopedia Tower

**CBD**  
Mega Kuningan Business District  
Sudirman Central Business District

**EMBASSY**  
Embassy of Sweden,  
Embassy of the United Arab Emirates  
Embassy of Canada  
and many more

**SHOPPING MALL**  
Lotte Shopping Avenue  
Mall Ambassador  
and many more

**UNIVERSITY**  
Atma Jaya University  
Bakrie University

**HOSPITAL**  
MRCC Siloam Hospital



The information contained in this brochure is for illustration purposes only and is subject to change. Statements, figures, calculations, plans, images and representations are indicative only. Whilst all reasonable care has been taken in providing this information, the developer and its related companies and their representatives, consultants and agents accept no responsibility for the accuracy of any information contained herein or for any action taken or reliance thereon by any part whether purchaser, potential purchaser or otherwise. The information contained in this brochure is a guide only and does not constitute an offer, inducement, representation, warranty or contract. The developer assumes no liability or responsibility for any errors or omissions in the content contained herein.



THE EMINENT  
CHOICE **FOR**  
**A TIME**  
**INVESTMENT**



The information contained in this brochure is for illustration purposes only and is subject to change. Statements, figures, calculations, plans, images and representations are indicative only. Whilst all reasonable care has been taken in providing this information, the developer and its related companies and their representatives, consultants and agents accept no responsibility for the accuracy of any information contained herein or for any action taken in reliance thereon by any part whether purchaser, potential purchaser or otherwise. The information contained in this brochure is a guide only and does not constitute an offer, inducement, representation, warranty, or contract. The developer assumes no liability or responsibility for any errors or omissions in the content contained herein.

# STUDIO

24 sqm

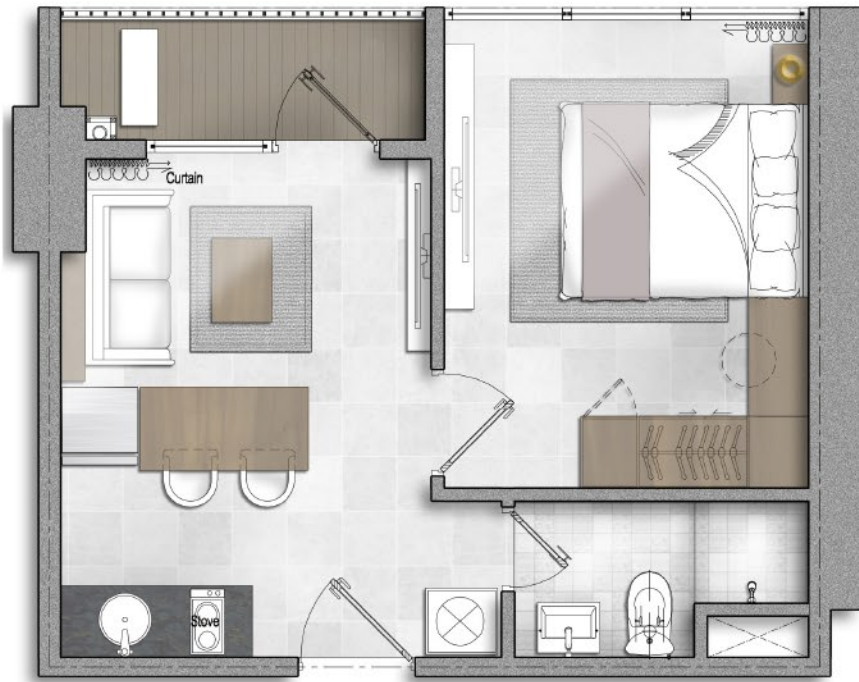


VR



# 1 BEDROOM

40 sqm



VR



# 2 BEDROOM

60 sqm



VR



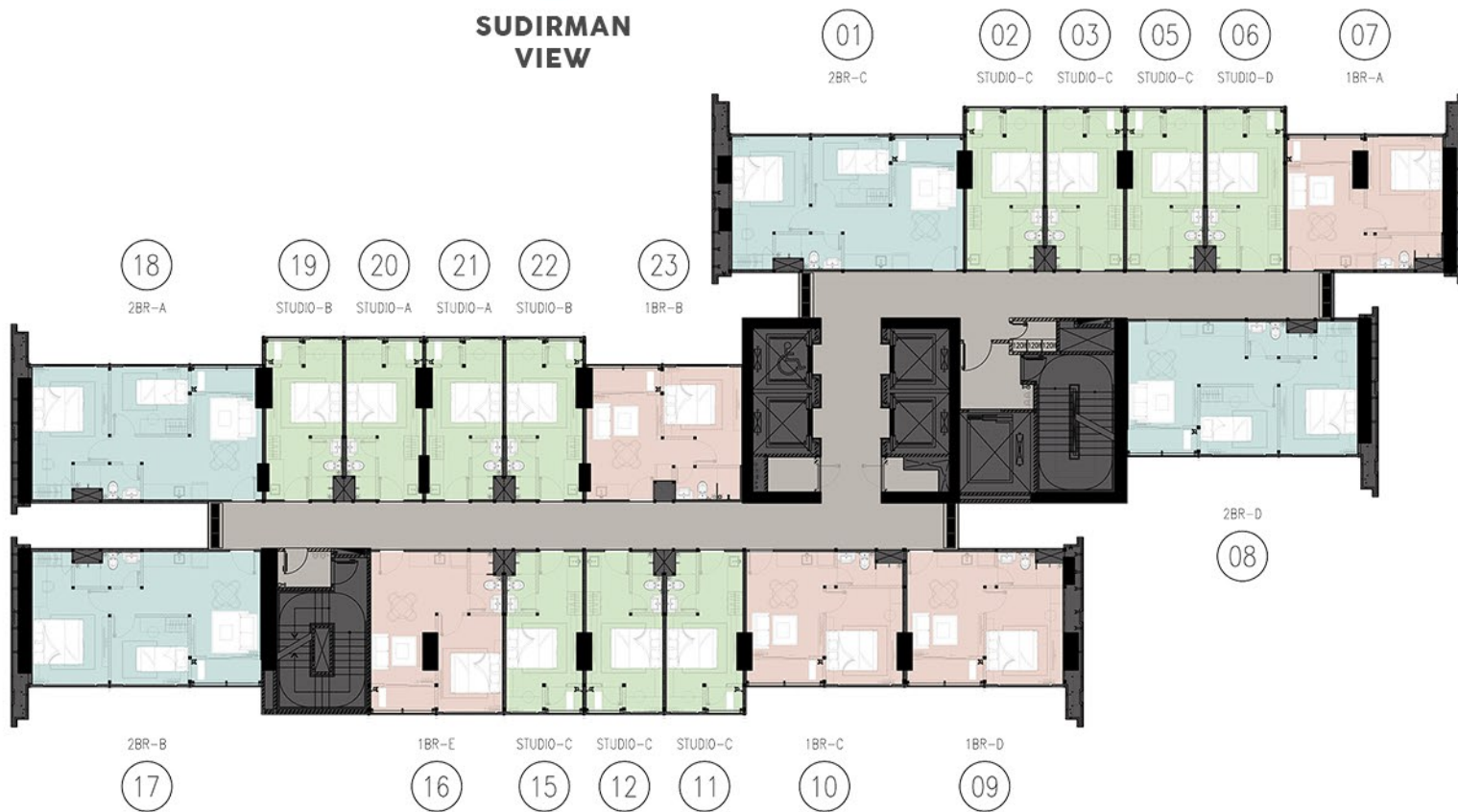
LIVING  
THE DREAM  
**LIVE WITH  
EXPERIENCE**





The information contained in this brochure is for illustration purposes only and is subject to change. Statements, figures, calculations, plans, images and representations are indicative only. Whilst all reasonable care has been taken in providing this information, the developer and its related companies and their representatives, consultants and agents accept no responsibility for the accuracy of any information contained herein or for any action taken in reliance thereon by any party whether purchaser, potential purchaser or otherwise. The information contained in this brochure is a guide only and does not constitute an offer, inducement, representation, warranty, or contract. The developer assumes no liability or responsibility for any errors or omissions in the content contained herein.

**SUDIRMAN  
VIEW**



**GATOT SUBROTO - SCBD  
VIEW**



# TYPICAL FLOOR PLAN

LT 26-28 | LT 33-36



LUXURIOUS  
PERKS TO  
COMPLIMENT  
**YOUR**  
**VIBRANT**  
**LIFESTYLE**



Marketing Executive  
Ciputra Group  
Ciputra World2 Jakarta  
Dicky 0812 8899 0169



MARKETING GALLERY  
CIPUTRA WORLD2 JAKART  
CIPUTRA WORLD2 JAKART  
CIPUTRA WORLD2 JAKART  
CIPUTRA WORLD2 JAKART

